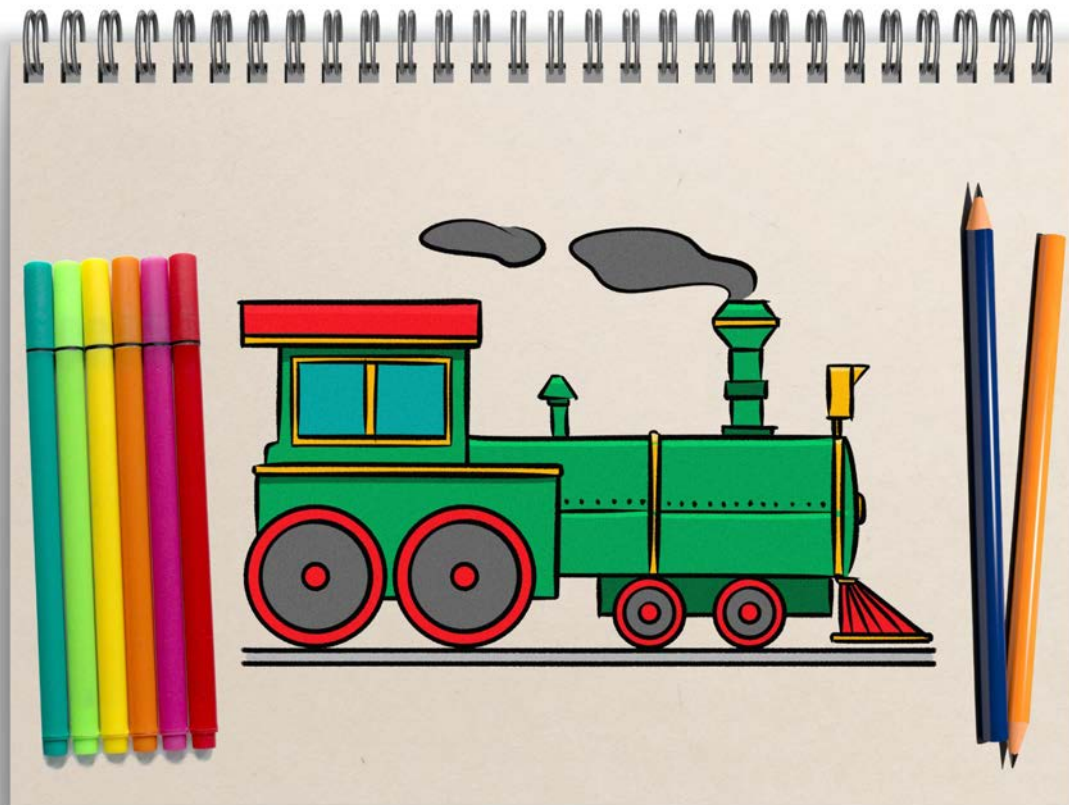


Drawing a train - step by step guide

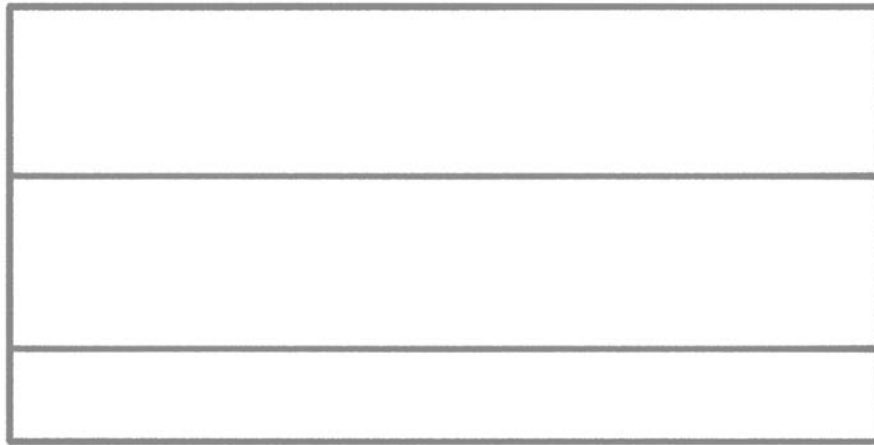


A train with a steam locomotive is always a nice motif for illustrating children's stories or invitation cards. Given its clean and organized form, a train is fairly easy to draw with a good template. This step-by-step guide can help you create a train with the right proportions.

⚠ This drawing requires care and a little patience, because the train only looks really good if everything is drawn neatly and straight. For the drawing you need a pencil, a ruler, a pair of compasses, an eraser, an erasable drawing pen and suitable colors according to your taste.

© Progettazione 2019

1

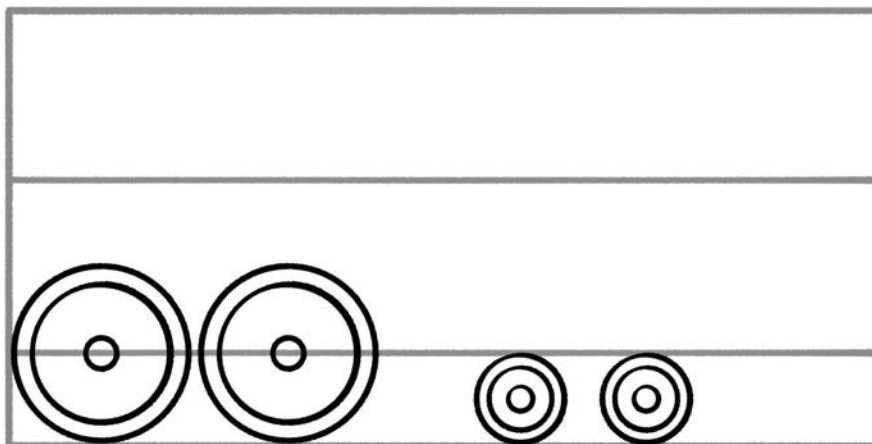


Step 1: Division of the drawing area

For a good orientation on the drawing paper, you first need two auxiliary lines, which you draw with a thin pencil line. With the first you mark the lower quarter of the drawing area. Use the second auxiliary line to divide the area above the first into two equal halves.

© Progettazione 2019

2

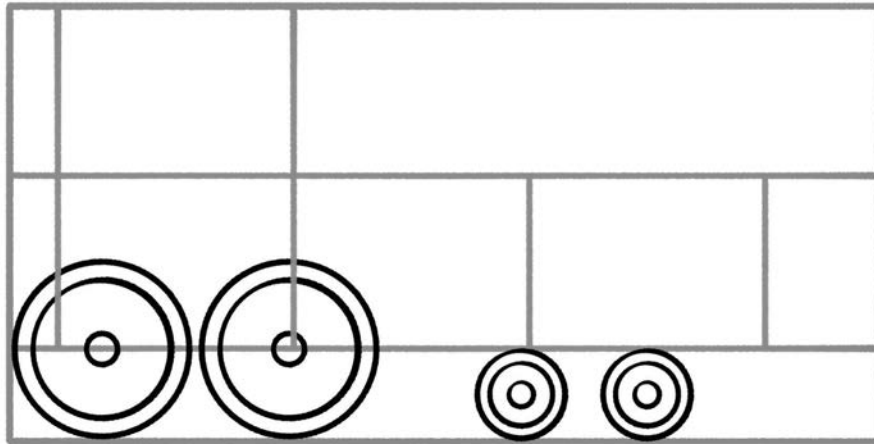


Step 2: Wheels

Using a compass, draw two large wheels at the back edge of the picture, the center of which is on the lowest auxiliary line. The front two smaller wheels of the train reach from the bottom edge to the lowest guide line.

© Colomio.com

3

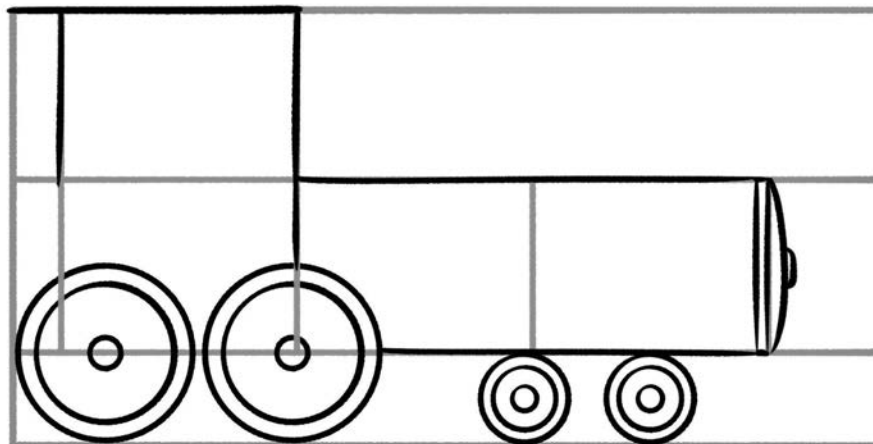


Step 3: More cab guides

Using a pencil, add four vertical guides dividing the locomotive into three equal sections.

© Colomio.com

4

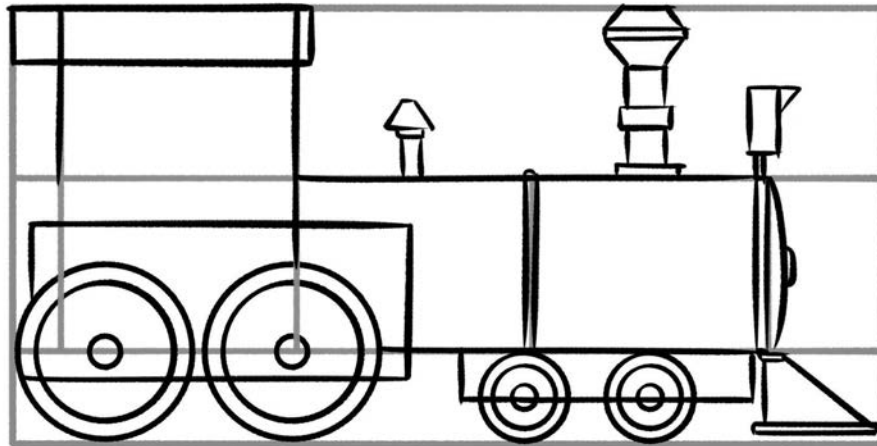


Step 4: First lasting contours for the driver's cab and boiler

Now use the pencil to draw the outline of the locomotive and use the auxiliary line to keep proportions. It is best to use a ruler so that the lines are clear and straight.

© Colomio.com 2016

5

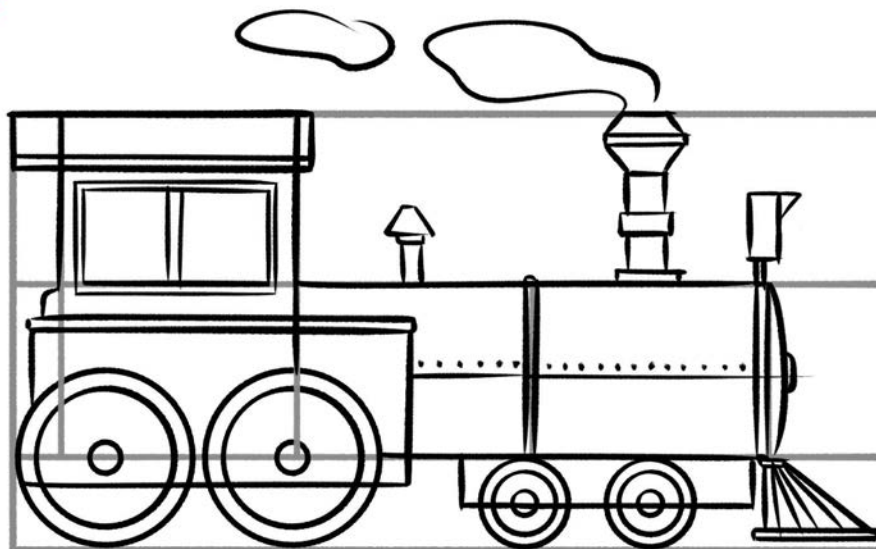


Step 5: chimney, peak signal and further details

Add the first details. These include, for example, chimney, whistle, wheel housing and rail clearers. Here, too, note the auxiliary lines in order to comply with the natural proportions.

© Colomio.com 2016

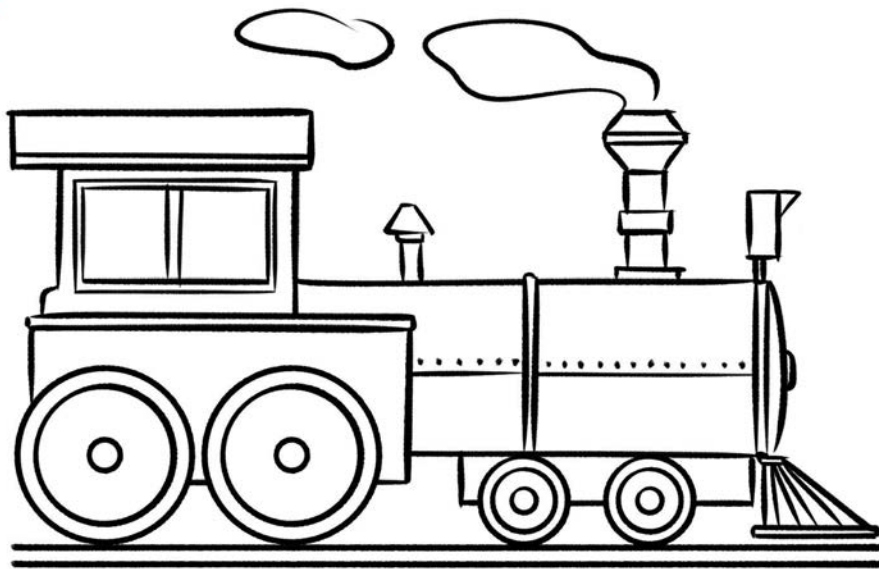
6



Step 6: Windows, Smoke, and Boiler Rivets

Add more details like windows, rivets, and puffs of smoke. And trace everything neatly with a drawing pen.

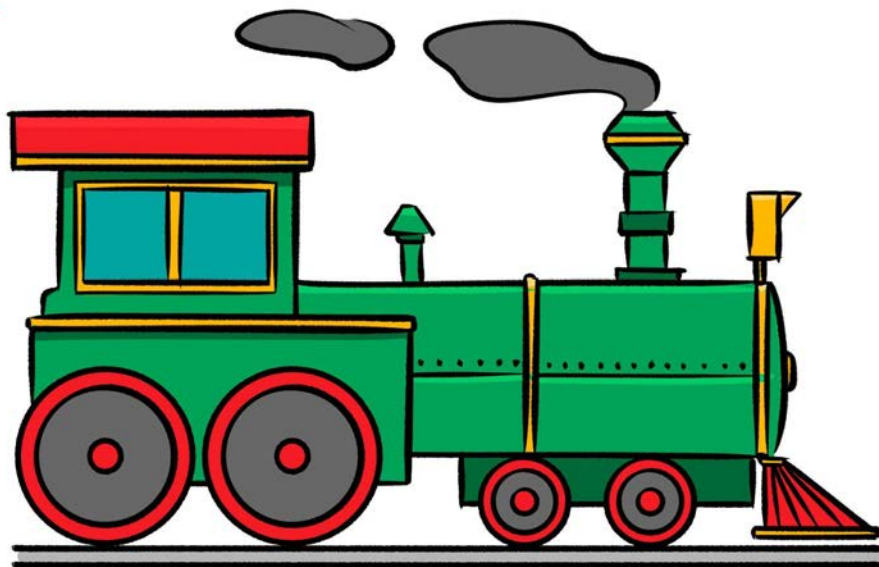
7



Step 7: Remove the guidelines

Carefully erase the underlying pencil drawing and any guidelines.

8



Step 8: Coloring

In the last step you can colorize your train. Use different gradations of each color to create a three-dimensional effect and add depth to your drawing.

All instructions shown here are protected by copyright and are subject to the copyright of happycolorz GmbH. Interested in using it? Please just send an email to utilisation@happycolorz.de.

Drawing complete?

Take a photo, upload it to pinnwand.happycolorz.de and show it to other users!