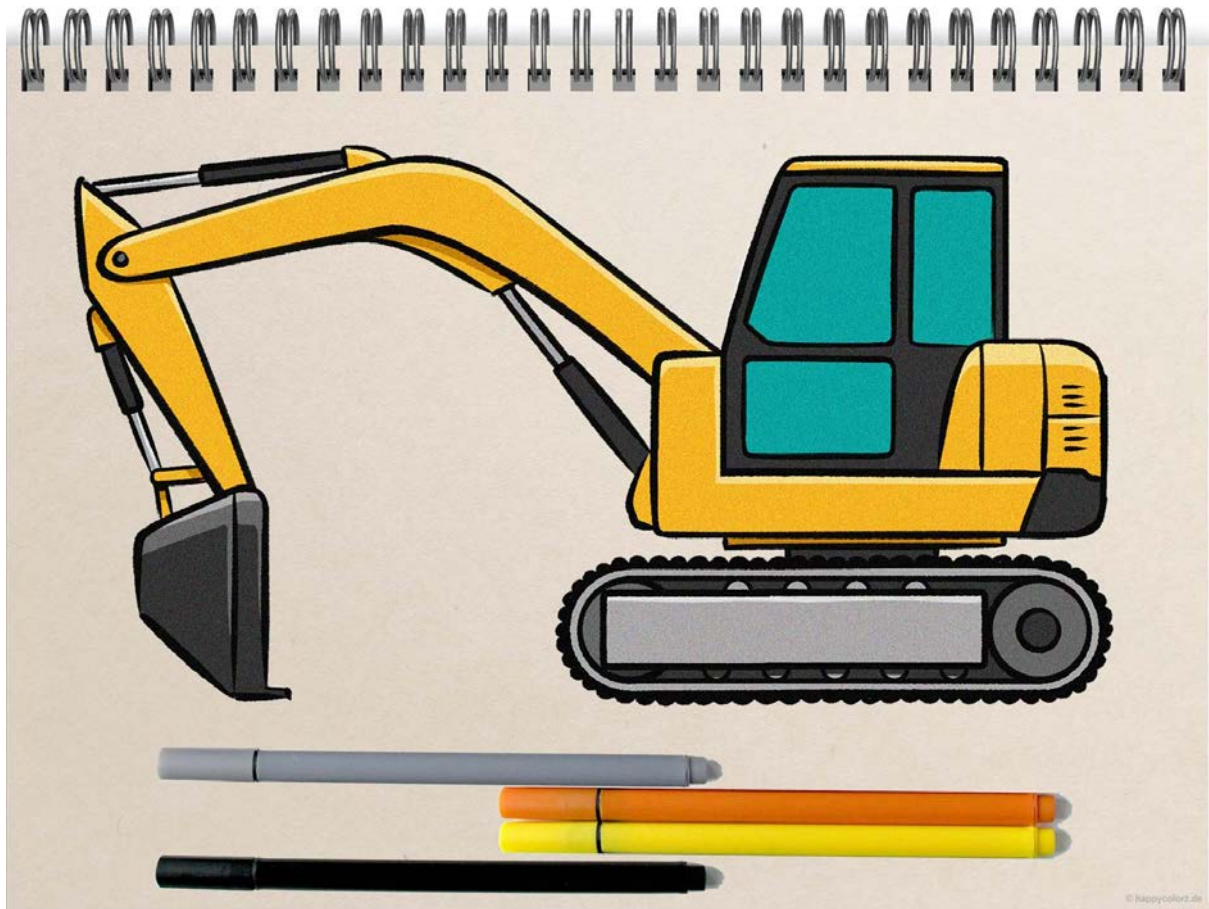


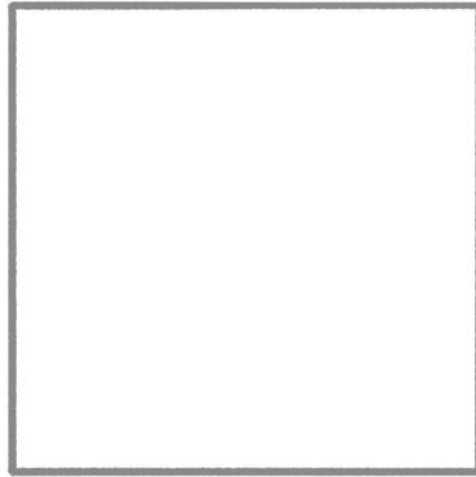
Excavator drawing - step-by-step instructions



These instructions will inspire all big and small excavator fans. Step by step you will succeed in drawing a complex technical device. ⚠ For the preliminary drawing you need a hard, easily erasable pencil (e.g. H2 or HB). It is best to trace the final contours with an erasable drawing pen.

© stepsoflearning.com

1

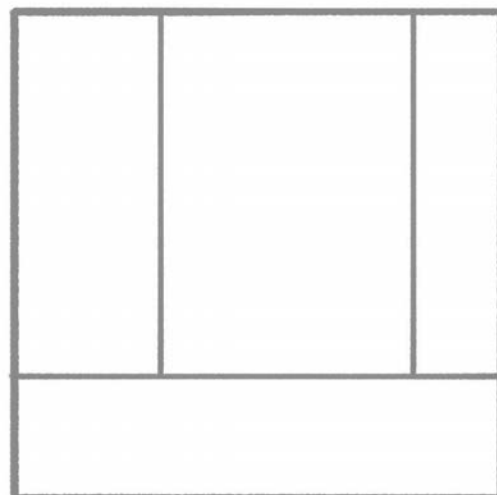


Step 1: Frame

You draw a square with the pencil.

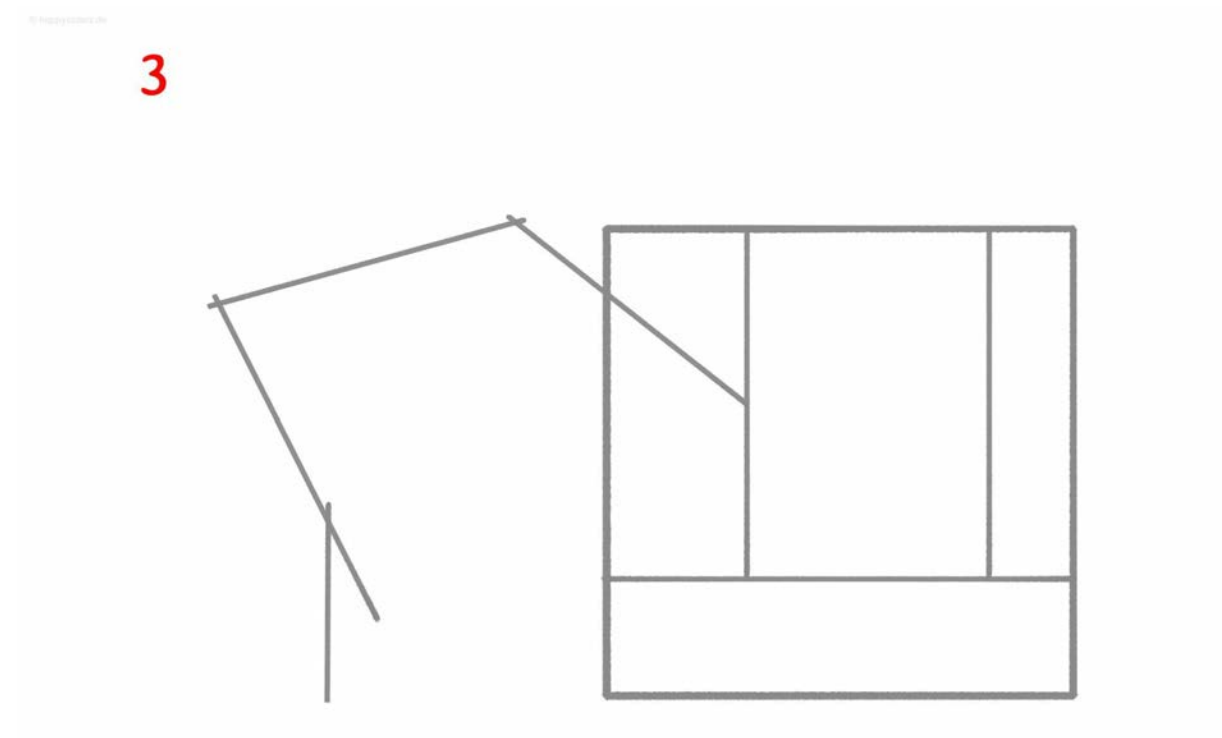
© stepsoflearning.com

2



Step 2: Division of area Divide

the square into four rectangles of different sizes, as you can see on this template.

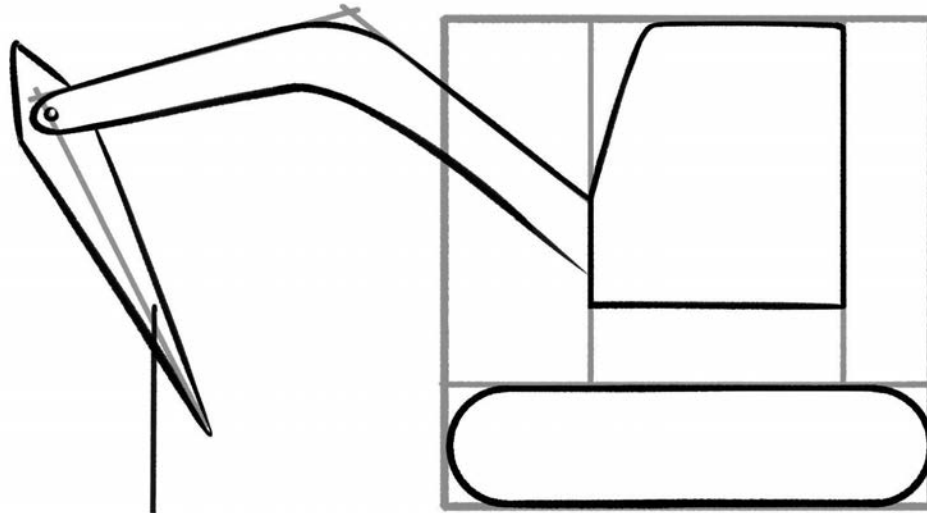


Step 3: Excavator arm

Now use a few straight lines to define the course of the boom with the dipper stick and the shovel. It is best to use a ruler for this.

© 2022 Colomio Ltd.

4

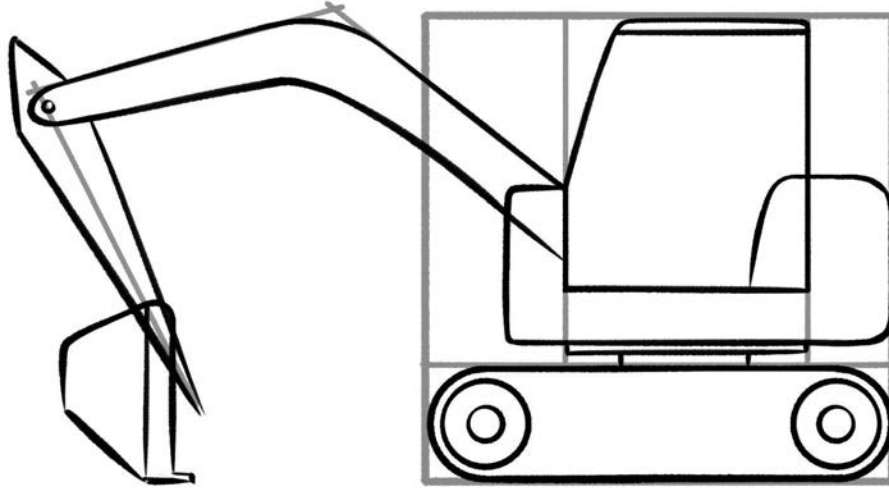


Step 4: First details

Use the drawing pen to draw the first permanent outlines on the paper. You draw the outline of the undercarriage with the crawler chassis in the lower rectangle in the main square. In the middle part of the square you draw the driver's cabin. This is followed by the finishing of the boom and dipper stick.

© happycolombio.com

5

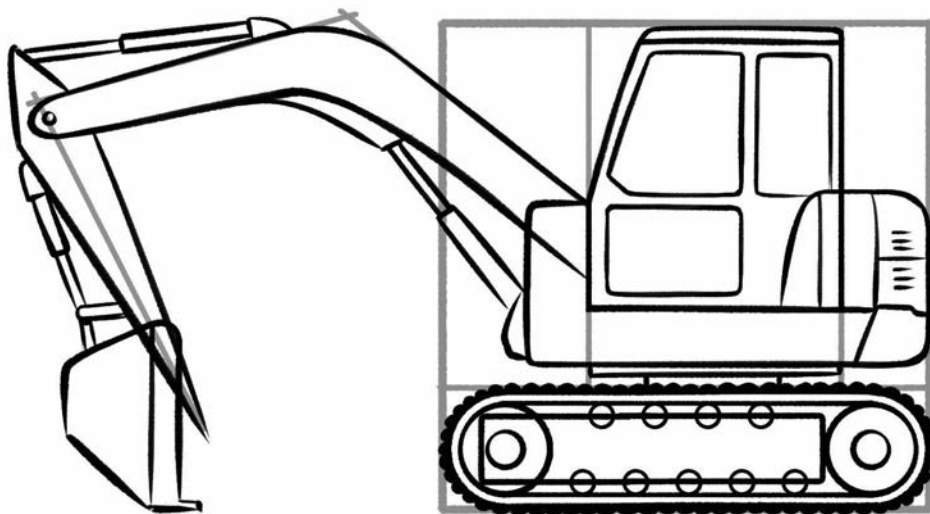


Step 5: Shovel, Wheels and Driver's Cab

With the excavator shovel and wheels, more details are added. The template also shows you how to design the cab in more detail.

© happycolombio.com

6

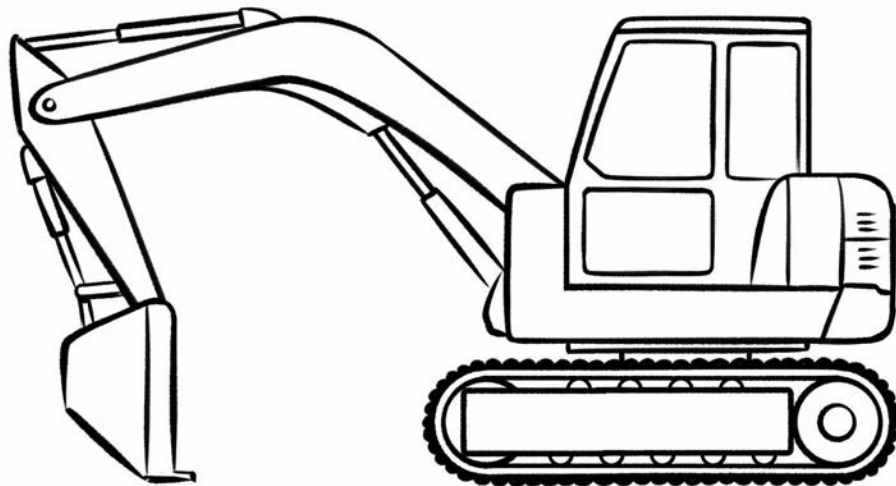


Step 6: Windows, Hydraulic Cylinders & Air Vents

The drawing becomes more technically perfect. More and more details complete the picture. These are numerous filigree elements that ensure a professional appearance. Please follow the instructions carefully.

© happycolours.it

7

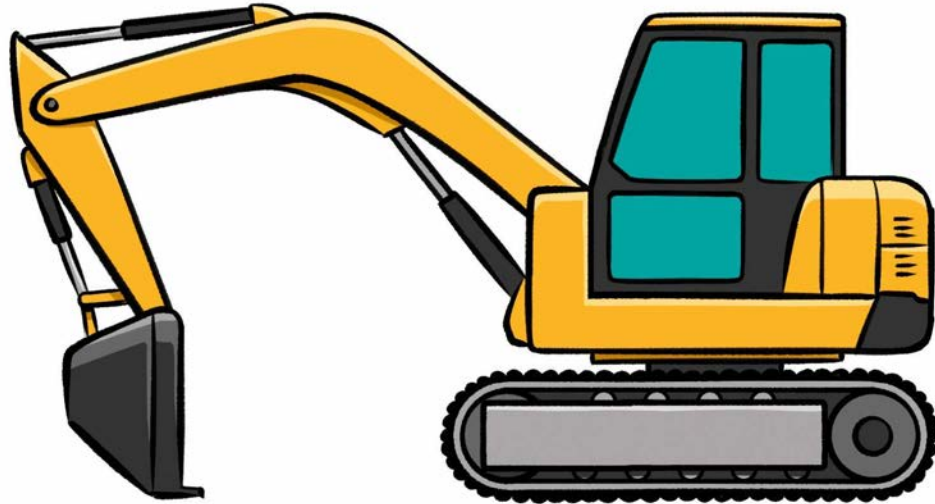


Step 7: Removing the auxiliary lines

Once all the details have been set with the drawing pen, you erase the auxiliary lines. The square with the rectangles disappears. You can be justifiably proud of the result.

© happycolorz.de

8



Step 8: Coloring

You take the colored pencils and color in the excavator. On the template, the excavator is yellow. You will also need blue paint for the windows, as well as different shades of gray.

All instructions shown here are protected by copyright and are subject to the copyright of happycolorz GmbH. Interested in using it? Please just send an email to utilisation@happycolorz.de.

Drawing complete?

Take a photo, upload it to pinnwand.happycolorz.de and show it to other users!