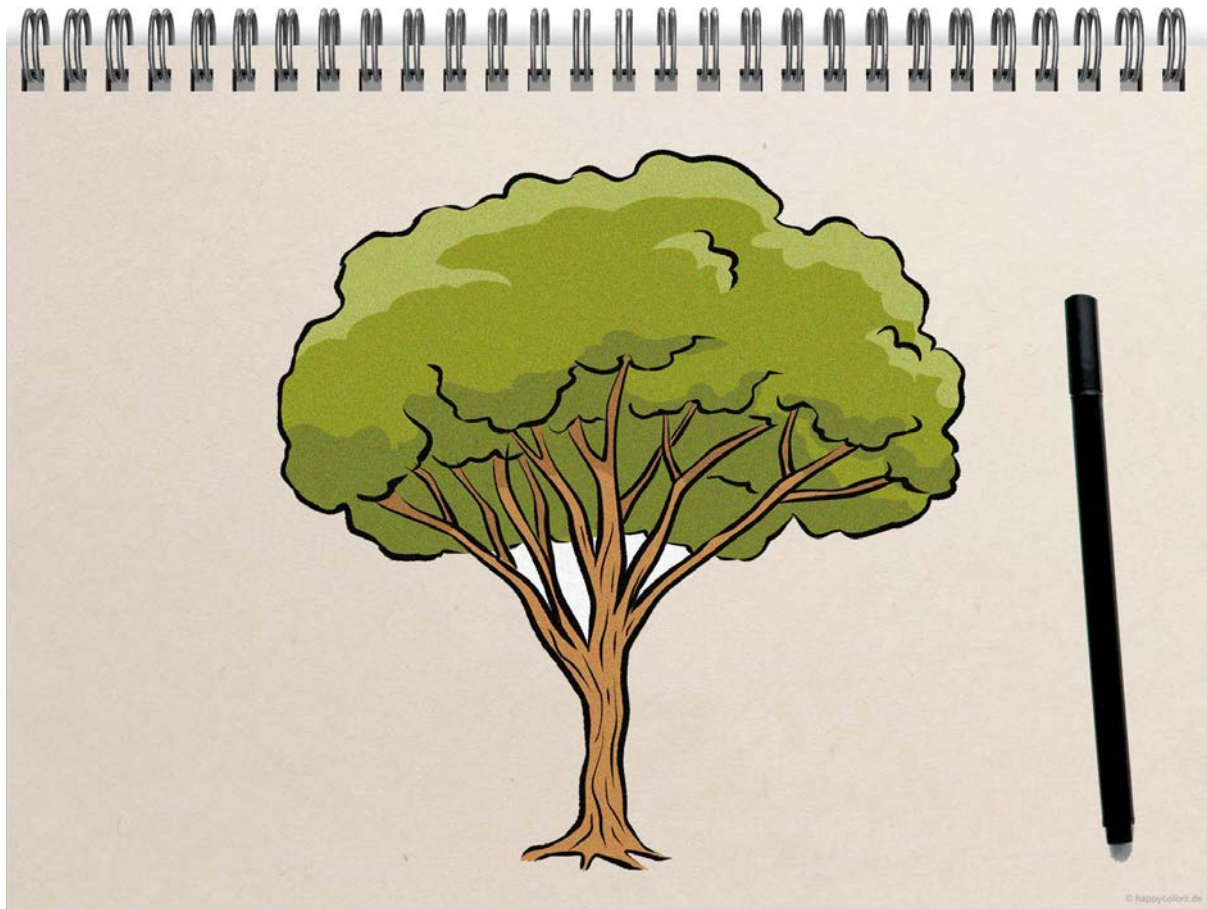


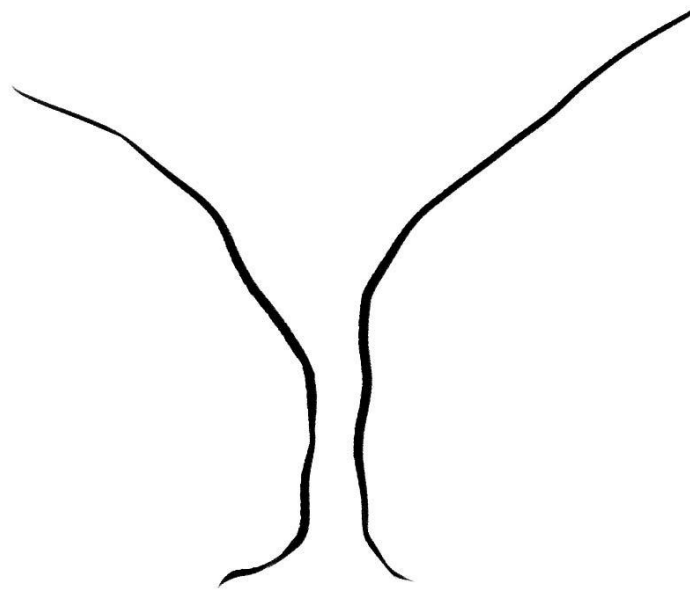
Tree drawing - step-by-step instructions



A beautiful tree should not be missing in any landscape drawing. With this step-by-step guide, you can draw a natural tree in just six sections. This description represents a classic deciduous tree and offers you a template for countless trees, the shape of which you can easily modify with a little practice.

⚠ For the drawing you need a thin pencil, an erasable drawing pen and colors that suit your taste.

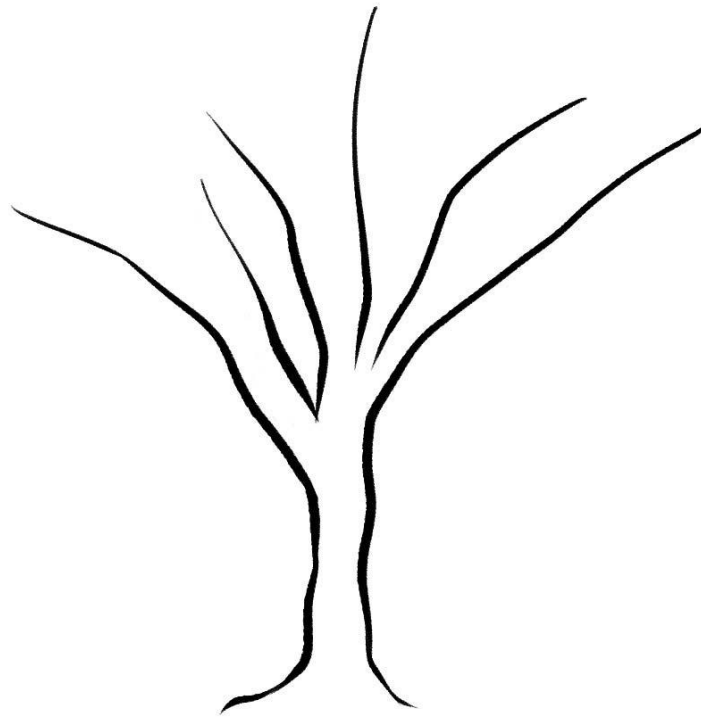
1



Step 1: Silhouette of the trunk and the outer branches

First, use a pencil to draw the outer lines of the tree trunk, which merges into the branches at the top. Pay attention to natural curves and a slight unevenness.

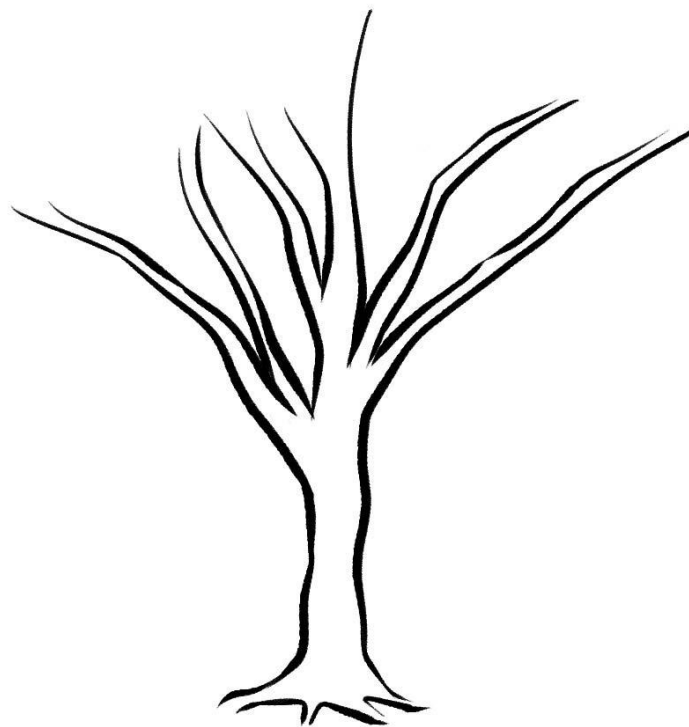
2



Step 2: The branch forks

Refine the branches with thin pencil lines.

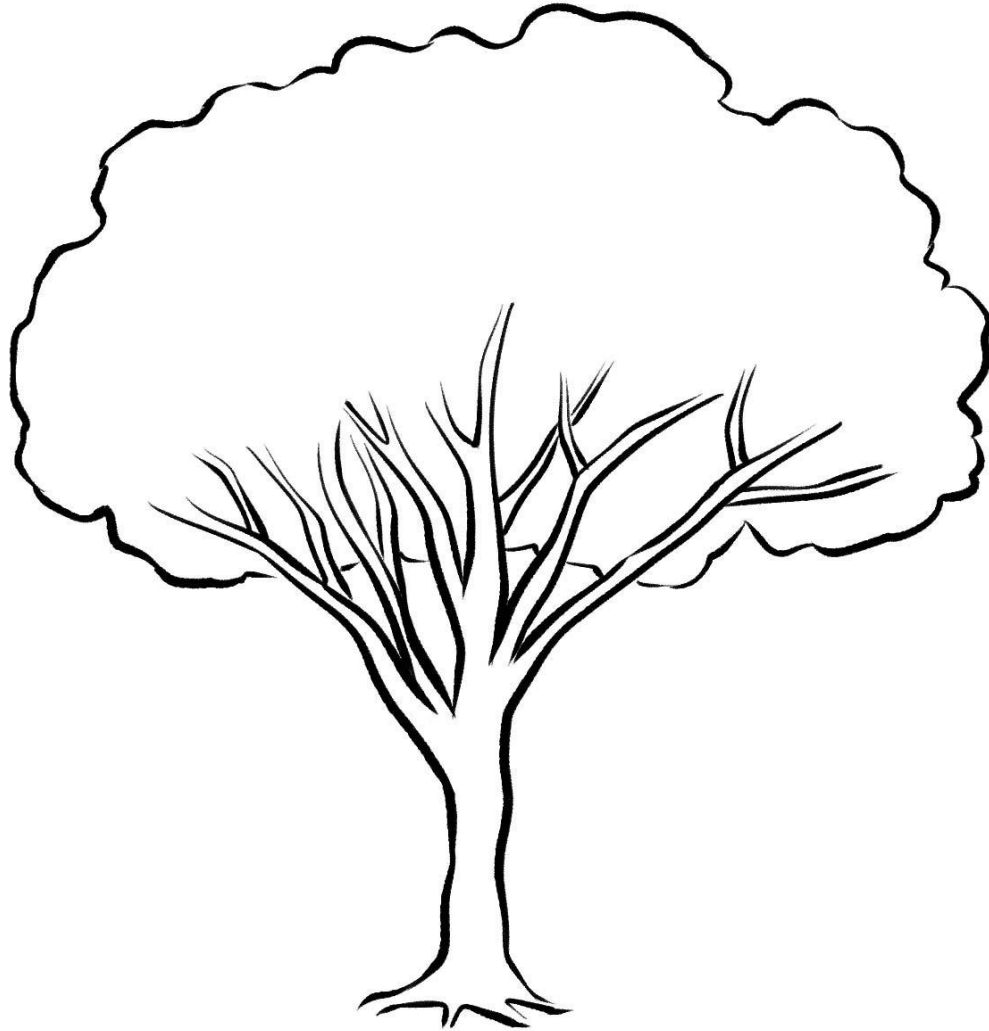
3



Step 3: Completion of the main branches

Now draw the width of the branches completely. At the top they can end unclearly as the canopy will join. Only when depicting trees in winter do you have to continue the branches up into the treetops.

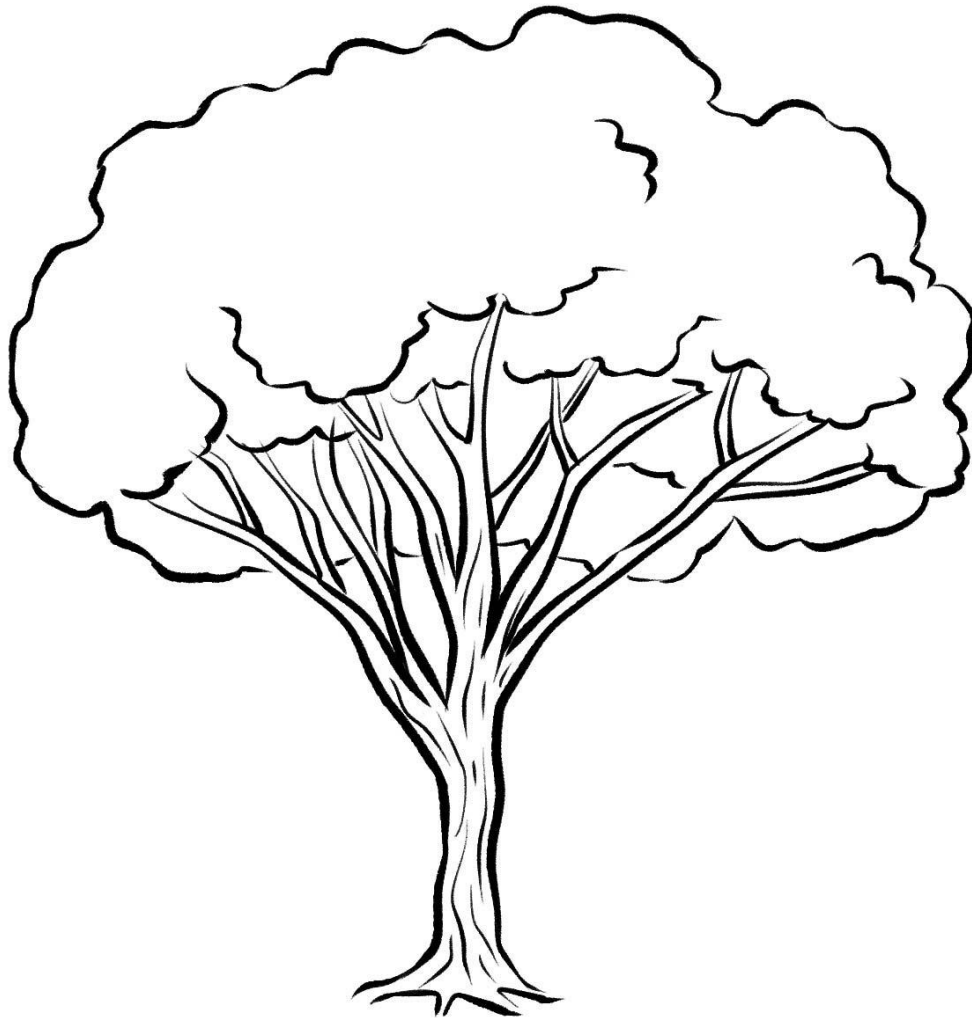
4



Step 4: More small branches & crown of leaves

Draw the outlines of the crown of the tree with a pencil and pay attention to a natural, irregular line here as well.

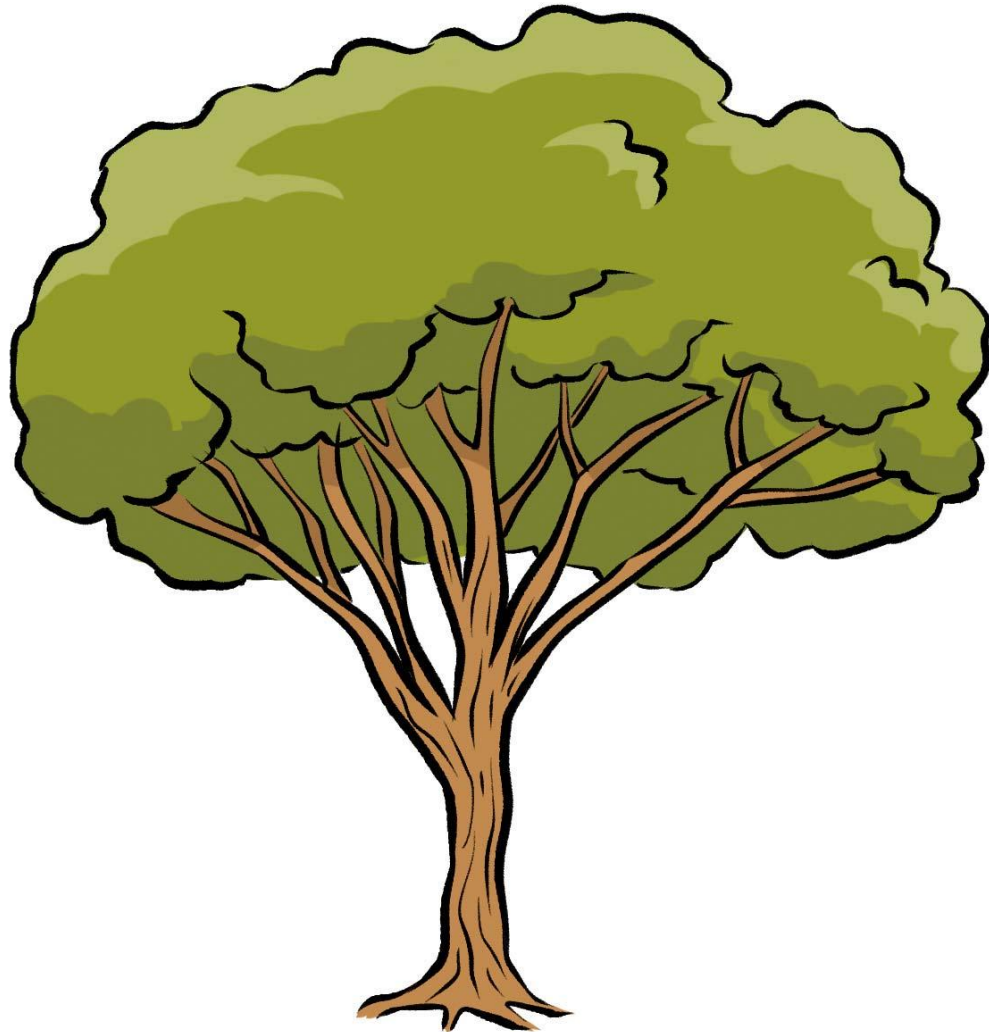
5



Step 5: Spatial effects

Give the treetop and trunk a three-dimensional look with distinctive highlights such as contours on the bark and additional sections in the crown of leaves.

6



Step 6: Coloration

In the last step you can bring your drawing to life with color. Trace over the drawn pencil lines with a drawing pen and color the tree in different shades to make it look natural.

All instructions shown here are protected by copyright and are subject to the copyright of happycolorz GmbH. Interested in using it? Please just send an email to utilisation@happycolorz.de.

Drawing complete?

Take a photo, upload it to pinnwand.happycolorz.de and show it to other users!